

LOGIQ 3

*Premium technology for
ultrasound professionals*



GE Medical Systems
Ultrasound

gemedical.com

LOGIQ 3: A new generation

Introducing the new LOGIQ 3 system

New ultrasound technology designed just for you.

Now, GE Medical Systems brings the power and performance of its LOGIQ family of leadership ultrasound technology to the office-based practice.

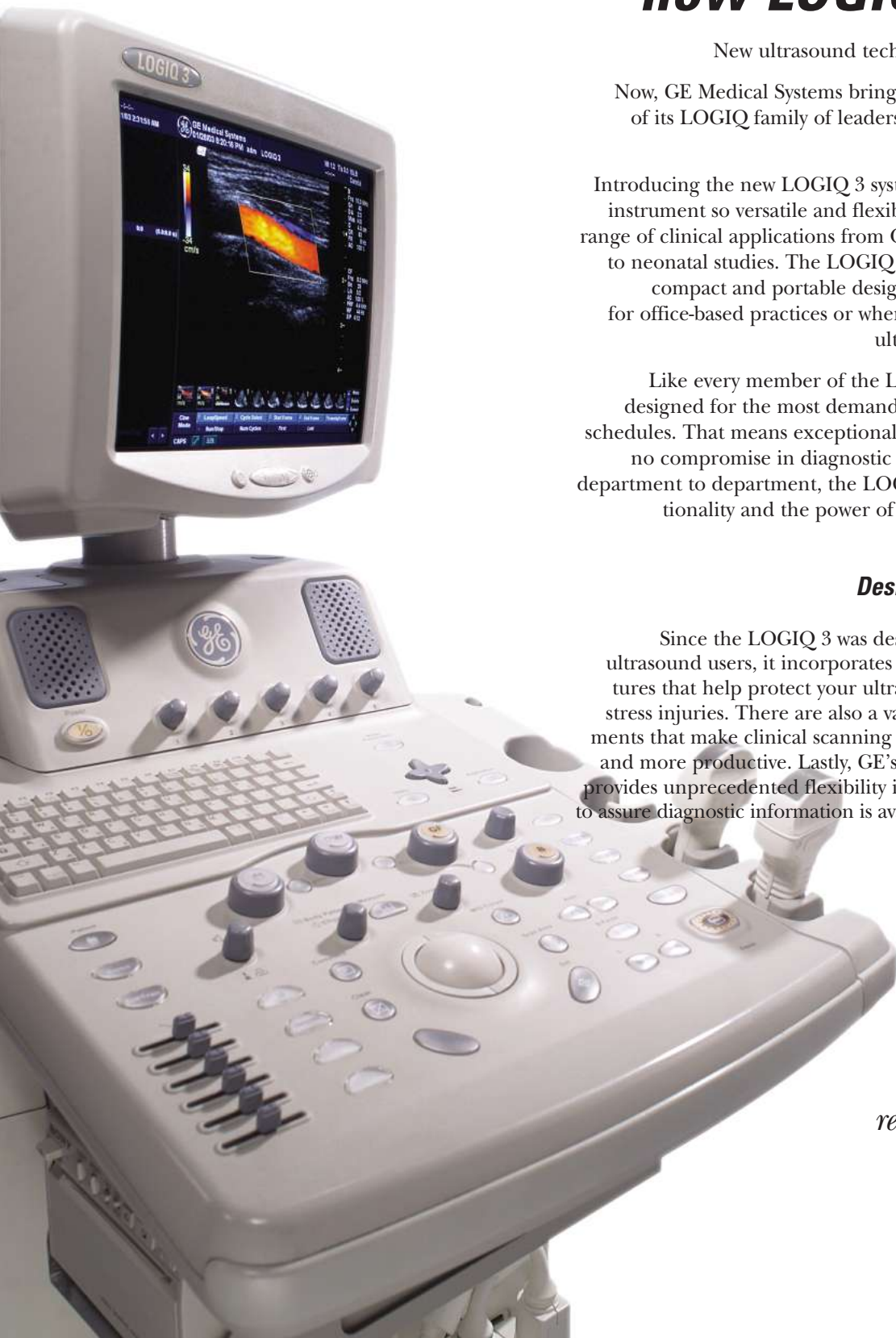
Introducing the new LOGIQ 3 system – an advanced ultrasound instrument so versatile and flexible that it can be used in a full range of clinical applications from OB/GYN, vascular and cardiac to neonatal studies. The LOGIQ 3 offers the most economical, compact and portable design – making it the ideal choice for office-based practices or wherever economical full-function ultrasound scanning is required.

Like every member of the LOGIQ family, the LOGIQ 3 is designed for the most demanding applications and rigorous schedules. That means exceptional ease of use and mobility with no compromise in diagnostic flexibility. Room to room and department to department, the LOGIQ 3 delivers advanced functionality and the power of raw data processing wherever and whenever needed.

Designed for ultrasound users.

Since the LOGIQ 3 was designed by ultrasound users for ultrasound users, it incorporates a full range of ergonomic features that help protect your ultrasonographers from repetitive stress injuries. There are also a variety of productivity enhancements that make clinical scanning easier, faster, more consistent, and more productive. Lastly, GE's exclusive raw data processing provides unprecedented flexibility in manipulating stored images to assure diagnostic information is available and improves workflow.

LOGIQ 3 – A truly revolutionary advance in ultrasound



of ultrasound imaging

TruScan Architecture

Power and performance,
today and tomorrow

*TruScan brings together
GE's exclusive technologies
under one architecture.*

The power of TruScan Architecture.

TruScan Architecture – another GE ultrasound exclusive – represents an entirely new way to efficiently acquire and view ultrasound images. This software-intensive platform provides an extremely flexible imaging environment today while completely preserving your ability to upgrade as new advances appear.

LOGIC 3 implements three key TruScan Architecture components:

ComfortScan – Unique ergonomic design provides a new level of operator comfort and convenience

SmartScan – Advanced software improves exam times and enables new clinical applications and information management

TruAccess – The power of “raw data” provides new options in process and reconstructing images as well as changing workflow

The result? An integrated approach to ultrasound imaging, analysis and networking that will keep you at the cutting-edge of clinical capabilities now and in the future.

TruScan Architecture



ComfortScan

SmartScan

TruAccess

Our breakthrough pledge.

GE Ultrasound's product development team is deployed around the globe to allow us to quickly balance new clinical needs with appropriate technology solutions. Our goal – and commitment – is to provide GE ultrasound users a constant stream of innovative software and hardware upgrades that protect your investment by keeping every LOGIQ system at the forefront of clinical performance and productivity.

TruScan Architecture: Technology



ComfortScan

Ergonomically designed
for user comfort and safety

When we set out to design the LOGIQ family of advanced ultrasound systems, we asked experts around the world for their suggestions on how to enhance operator comfort and safety. From these inputs, GE engineers developed a series of ergonomic advances that not only minimize the chances for repetitive stress disorder, but boost clinical productivity as well.



*Ultra-mobile.
The LOGIQ 3 moves
easily from room to room.*



*Ergonomic user interface,
with standard, full-featured
ultrasound keyboard,
increases user comfort
and productivity*



*Fifteen-inch
high-resolution monitor.*

*Integrated mode and gain
controls help ensure fast
and efficient studies.*

*Simple, intuitive
single-hand operation.*

*Two active probe
ports for ease of use.*

*Small system footprint
(19.7" w X 37.2" d).*

*Highly-maneuverable,
four-wheel platform
with front-wheel lock.*

to improve patient care

SmartScan

A full software suite for improved productivity

LOGIQ 3 uses a variety of adaptive processing techniques to help you acquire consistent, high-quality images in the shortest possible time. We call this suite of productivity enhancements SmartScan tools. Major performance features include:

- Automatic optimization to improve image quality and consistency
- Easy3D integrated for improved diagnostic confidence from viewing images in other planes
- Virtual convex creates a convex field of view for a 30% increase in image size in linear transducers
- Comprehensive reporting packages matched to your needs
- Flexible on-board image management



The power of raw data

TruAccess

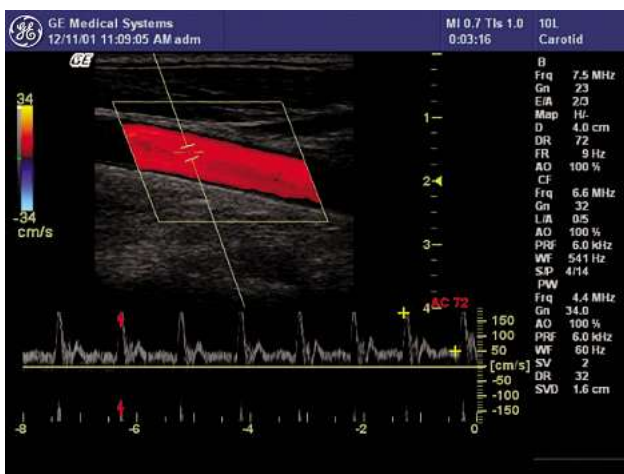
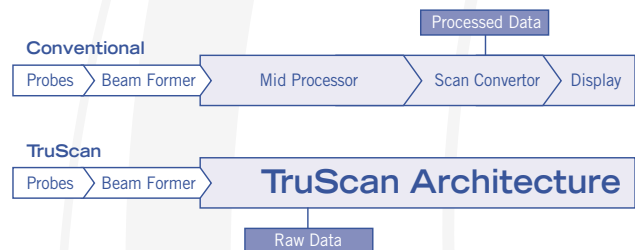
Live scan controls applied to stored images

Another exclusive feature of TruScan Architecture, TruAccess, or raw data, allows live scanning techniques to be applied to stored images long after the patient study has been completed. With TruAccess, clinicians may then retrieve and manipulate the information whenever and however desired using real-time scanning techniques.

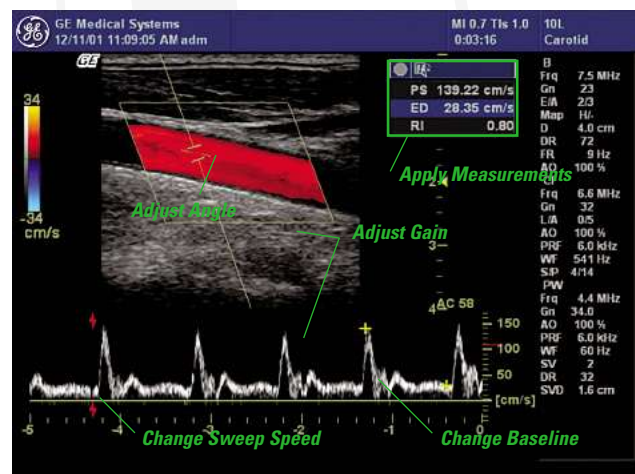
For additional versatility, TruAccess data is stored in a DICOM compliant format that lets you easily share images and information with other scanners, workstations and archives.

Examples of the versatility of TruAccess include:

- B-mode gain, dynamic range and gray scale maps to bring out subtle detail
- Color invert, color maps and on/off capability
- Doppler gain, baseline shift, sweep speed, angle adjust and spectral invert for Doppler optimization after scanning
- Reconstruct a stored cine loop into a 3D image for virtual rescanning
- Measurements without calibration



Original Image



Measured and optimized from a stored image



Carotid with Color and Spectral Doppler



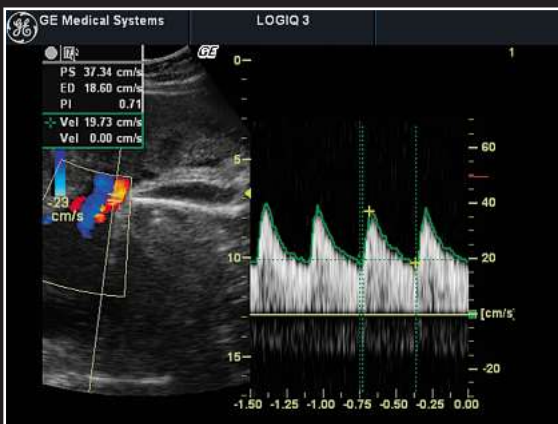
Color Doppler visualization of the Portal Vein



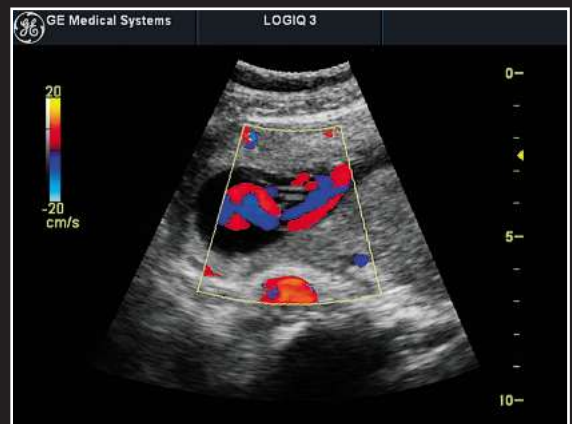
Hyperechoic liver nodule and large ascites



Power Doppler visualization of kidney vascularization



Pulsatile Index measurement/ Color and Spectral Doppler



Color Doppler visualization of the umbilical cord



Breakthroughs backed by complete support.

The new LOGIQ 3 is another example of the constant stream of innovations from the scientists, engineers and sonographers at GE Medical System's Ultrasound business – breakthroughs that provide the superb image quality, clinical utility and department-wide productivity you are seeking.

World-class support – And like all our imaging systems, LOGIQ 3 is backed by world-class GE service, financing, applications training and continuing education. GE customers have long depended on our responsive on-site service support, as well as our pioneering InSite® remote diagnostics. You'll also have access to our exclusive iLinq™ on-demand support that gives you immediate access to vital information directly from your scanner console.

Unsurpassed quality – You also have the assurance of knowing that your GE equipment is the product of Six sigma strategies, a philosophy of quality in the design and manufacture of our products to meet our customer's most exacting performance and reliability expectations.

Investment security – GE Medical Systems is a world leader in diagnostic imaging products and support. For more than 100 years, healthcare providers worldwide have relied on GE for high-quality imaging technology, services and productivity solutions. No matter what challenges your healthcare enterprise faces, you can always count on GE to help you deliver studies of the highest quality.

Ask your GE representative for all the latest details or visit our website today – www.gemedical.com



GE Medical Systems
Imagination at work

General Electric Company reserves the right to make changes in specifications and features shown herein, or discontinue the product described at any time without notice or obligation. Contact your GE Representative for the most current information.

© Copyright 2003 General Electric Company
03-XXXX Printed in USA

Internet – gemedical.com
GE Medical Systems – Americas: Tel: (866) 344-3633
P.O. Box 414, Milwaukee, Wisconsin 53201 U.S.A.

GE Medical Systems – Europe: Tel: (49) 212 2802-0
Solingen, Germany

GE Medical Systems – Asia:
Shanghai, China – Tel: (86) 21-52080200